



מוזיאון ישראל, ירושלים
the israel museum, jerusalem
متحف إسرائيل، أورشليم القدس



April – June

2018

April – June 2018

The Israel Museum and Shrine of the Book Complex are open:

Sun, Mon, Wed, Thurs 10 am – 5 pm
 Tues 4 pm – 9 pm
 Fri and Holiday Eve 10 am – 2 pm
 Sat 10 am – 5 pm

Passover

Tues **3.4** 10 am – 9 pm
 Thurs **5.4** 10 am – 2 pm **Free entrance** courtesy the Crown Family
31.3–7.4 **Free entrance** for children*
 courtesy of Sandy Batkin in memory of his wife, Ruth Batkin

Independence Day

Thurs **19.4** 10 am – 5 pm **Reduced entry fee**

Lag Ba'Omer and International Museum Day

Thurs **3.5** 10 am – 5 pm **Free entrance**

Shavuot Eve

Sat **19.5** 10 am – 2 pm

Free entrance for children* Tues and Sat, courtesy of Canadian Friends of the Israel Museum and David and Inez Myers, Cleveland, Ohio

*Under 18, excluding groups, activities, and special events

Free entrance for soldiers doing compulsory military service and for those doing National Service, courtesy of Israeli Friends of the Israel Museum

20% discount at the Bible Lands Museum and the Bloomfield Science Museum for the week following purchase of a ticket to the Israel Museum. One discount per ticket.

Wheelchairs and lockers are available in the Entrance Pavilion. Coat check and folding chairs are available at the end of the Route of Passage, near the elevators. Please inquire at the Information Desk.



Israel Museum, Jerusalem israel_museum

POB 71117, Jerusalem 9171002 | Tel. (02) 670-8811 | Fax (02) 677-1332 | info@imj.org.il
 Buses: 7, 9, 14, 35, 66

5	Exhibitions	24	Events and Cultural Programs
18	Shrine of the Book Complex	27	Gallery Talks
20	Rockefeller Museum	28	Members
21	Ticho House	29	Israeli Friends
22	Activities for the Whole Family	30	Guided Tours

page 5



page 7



page 11



page 9

On the cover: Dresses designed by Jerry Melitz in the 1970s. Photo: Ben Lam for the Israel Export Institute.
 From the exhibition **Fashion Statements**

The Museum gratefully acknowledges the generosity of those who contribute to its exhibitions:

The Bourgeoisie: Society and Style in European Art

Della and Fred S. Worms OBE European Art Endowment
Donors to the Israel Museum's 2017–18 Exhibition Fund*

Faces of Power: Roman Gold Coins from the Victor Adda Collection

The William Davidson Foundation, Detroit

Ashkelon: A Retrospective

Leon Levy Expedition to Ashkelon, through the Harvard Semitic Museum; Leon Levy Expedition supported by the Leon Levy Foundation and by Leon Levy and Shelby White, New York

Nomi Bruckmann: The Gift

Ticho House Fund

Faces behind the Screens

Dorot Foundation

Designing the Unexpected

Ira Eduardovna: On Foreign-Made Soles

Donors to the Israel Museum's 2018 Exhibition Fund*

Gil Marco Shani: Buses

Sponsored by **outset**.
Donors to the Israel Museum's 2017–18 Exhibition Fund*

Zoya Cherkassky: Pravda

Oren Eliav: How to Disappear Completely

Donors to the Israel Museum's 2017–18 Exhibition Fund*

Fashion Statements: Decoding Israeli Dress

Marla and Jeffrey Michaels, Los Angeles
Donors to the Israel Museum's 2018 Exhibition Fund*

I to Eye

Russell Berrie Foundation, New Jersey
Mariana Griessman Youth Wing Fund, London
The Morris Rodman Fund, Washington, DC
The J. Weinstein Foundation in memory of Joe and Celia Weinstein, New York
Donors to the Israel Museum's 2018 Exhibition Fund*

To Go: New Designs for Jewish Ritual Objects

Schusterman Foundation, Israel
The Jesselson Prize Fund for Contemporary Judaica Design
The Beare Foundation, Durban, South Africa
Sponsored by



Christian Boltanski: Lifetimes

Lenore S. and Bernard A. Greenberg Fund, California
Grace Frankel and Hanns Salzer Levi, Marbella, Spain
The Nash Family Foundation, New York

* Donors to the Museum's 2017–18 Exhibition Fund:
Claudia Davidoff, Cambridge, Massachusetts, in memory of Ruth and Leon Davidoff
Hanno D. Mott, New York
The Nash Family Foundation, New York

The Museum keeps its doors open with the help of its Guardian friends:

April 22–28 Joyce and Edward Strauss
May 6–12 The Morningstar Foundation

Exhibitions



The Chemical Warfare, 2016. Collection of the artist and Rosenfeld Gallery, Tel Aviv

Design Pavilion



Catalogue (English-Hebrew-Russian) | IS 129

Audio guide

For Gallery Talk information, see p. 27

Zoya Cherkassky Pravda

This exhibition presents Zoya Cherkassky's Realist paintings, focusing on the massive Russian immigration of the 1990s and the frictions between the new immigrants and Israeli society. The works – oils and works on paper from 2009 until today – deal with the artist's personal recollections of her immigration from the Ukraine in 1991 and the collective experience of the Russian immigrants who came during that period. In paintings that are at once realistic and grotesque, provocative and defiant, Cherkassky examines the stereotypes that form the views of Israelis and Russians alike, holding up a harsh and unsettling mirror to Israeli society. *Pravda* ("truth" in Russian) was the name of the Communist party's official newspaper in the former Soviet Union. Rather than reporting the truth, however, the paper disseminated the party's false and idyllic representation of a miserable reality. Cherkassky's art aims to do the exact opposite: to speak the complex, poignant, and often funny truth about the people who formed the greatest wave of immigration in Israel's history.

Muslin Brothers: Yaen Levi and Tamar Levit, FUGA collection, 2016. Photograph: Asaf Einy



From 14.6

Bella and Harry Wexner Gallery

Catalogue

For Gallery Talk information, see p. 27

Fashion Statements Decoding Israeli Dress

Based on pioneering research, *Fashion Statements* explores central themes in the history of dress in Israel: from the late 19th-century indigenous pre-Zionist “fashion,” through the opposing forces of Europeanism and Orientalism that converged in the early decades of the state, to the place that Israeli creativity holds on the global fashion scene today.

Through a sumptuous display of clothing, fashion sketches, films, and fashion photography, this large-scale exhibition illustrates the broad scope of fashion in Israel, from its deepest historical roots to contemporary collections, fostering a dialogue about tradition and modernity, myth and reality, and conflicting ideologies.

Presenting a rich, quintessentially local narrative, the exhibition is part of the Israel Museum’s ongoing exploration of this region’s cultural landscape.



Animitas (Dead Sea), 2007. © Christian Boltanski to American Friends of the Israel Museum

From 2.6

Robert and Rena (Fisch) Lewin Gallery. Hidegard and Simon Rothschild Foundation Gallery. Nathan Cummings Building for Modern and Contemporary Art

Audio guide
Catalogue

Christian Boltanski Lifetime

The vast scope of this exhibition presents a deeply visual and emotional experience, beginning in darkness and culminating in light and redemption. Leading artist Christian Boltanski returns to the Israel Museum for the third time to display works created over the last 40 years. Boltanski was born in Paris in 1944 to a Jewish father and Catholic mother. He grew up surrounded by those who survived the war and by memories of those who died; these childhood experiences are at the core of his work, which asks “big questions”: Is it possible to truly remember? How do we commemorate the dead? What will remain after we are gone?

Lifetime leads visitors from early artworks to recent pieces created especially for this exhibition. One such project, *Animitas* (small souls), is a video work for which Boltanski placed 300 Japanese wind chimes on the banks of the Dead Sea, arranged in accordance to the star alignment on the date of the artist’s birth. The bells’ ringing symbolizes the souls of the dead, as indicated by the work’s name; as a whole the installation functions as a contemporary memorial site.



Discard, 2017

From 1.6

Route of Passage and the Asian Art Gallery

Audio guide

Fragile 4028 Works by Liu Jianhua

For the first time in Israel, a display of works by contemporary Chinese artist Liu Jianhua. Delicate and comprised of multiple elements, these works are presented throughout the Museum's galleries. The black floor of the Route of Passage is lined with around 4000 white porcelain reproductions of everyday objects in a dramatic and fragile installation alluding to the complex co-dependency of Western obsessive consumption and Chinese over-production. In the Asian Art gallery, Liu Jianhua's works are displayed among the permanent collection, using a minimalist aesthetic to revive ancient Chinese objects and traditions.



Maya Samira and S. Hashimi, Iran-Israel (still from video), 2013

From 27.6

Weinstein Gallery,
Ruth Youth Wing for
Art Education

Audio guide for the whole
family

I to Eye

Every day we encounter family members, friends, visitors, and strangers; over the course of our lives, our social circle continues to expand. Modern technology makes us feel more connected than ever, allowing us to "meet" endless friends at any time through our screens and to feel like we are never alone. Is this true? This exhibition uses artworks to examine the changing social landscape of the virtual age, illuminating the importance of real relationships in our lives. Visitors are invited to witness encounters – from their first moments to their eventual conclusion – and rediscover the value of face-to-face encounters. Such meetings present invaluable opportunities to deepen our knowledge and understanding of the other, and therefore of ourselves.



Itay Ohaly, Vase from the "Unpacking" series, 2010–13

Spertus Gallery

Designing the Unexpected

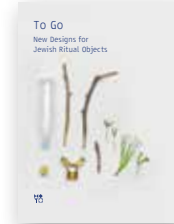
New in the Collection

In 1964 Danish designer Gunnar Aagaard Andersen created an armchair with unusually expressive qualities; without a predetermined plan or total control over his material, he poured layers of liquid polyurethane that melded together. Andersen used the same method to produce a small series of furniture pieces, in which the final forms were influenced by his movements as he poured, as well as by the properties of his material; he thus presented an antithesis to the standardized production of the time, expressing the ingenious harnessing of uncertainty and spontaneity in design. This exhibition showcases examples of contemporary design that were recently acquired by the Israel Museum. Each one relates in its own way to the issue of control – or lack thereof – and to the idea of working in a state of uncertainty. The objects were created by young Israeli and international designers who regard the irregularity and volatility of their materials as an integral part of the design process and implicitly responding to the post-industrial realities of our times. In addition to works by Andersen, the exhibition displays the work of Itai Ohaly, Florian Schmid, Jonathan Hopp, Lex Pott, and Hilla Shamia.



Nitzan Cohen, *Rolling Pins*, 2017. Collection of the designer, Milan

Design Pavilion



Catalogue | IS 149

Activity for children

For Gallery Talk information, see p. 27

To Go

New Designs for Jewish Ritual Objects

When we travel, we take with us the objects necessary for observing our most essential rituals. For this exhibition, leading contemporary designers – including Vered Kaminski, Yaacov Kaufman, Assa Ashuach, Nati Shamia Opher, Yuri Suzuki, and Gali Cnaani – were asked to create a travel-set of objects for a Jewish holiday or life-cycle event. Featuring Shabbat sets, a portable huppah, a matzah-making kit, objects for the Havdalah ceremony, and more, this exhibition offers fascinating and original perspectives on the design of religious object in the 21st century.



Buses, 2017–18 (simulation)

Jackie and Irving Blum
Gallery



Catalogue | IS 129

Audio guide

For Gallery Talk
information, see p. 27

Gil Marco Shani

Buses

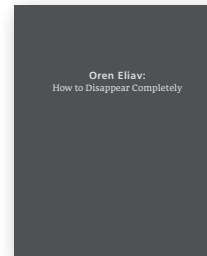
Acclaimed Israeli artist Gil Marco Shani penetrates the galleries of the Israel Museum to create an unexpected and disorientating space inside the Museum: an imaginary parking lot created between two gallery levels, complete with two tourist buses. In this ambitious architectural intervention visitors can see what appear to be entire buses, but what are in fact only partial constructions, adapted to the angle of vision. Shani ingeniously fabricated the buses along with the space's many realistic details using a variety of materials and techniques; effects of sound and temperature complement the optical illusion and enhance the viewer's physical experience.

The installation's incongruity and uncanny artificiality produce a feeling of suspense and mystery. Finding themselves suddenly in a parking lot located between Museum galleries, the visitors are disoriented and drawn into an obscure and anonymous place in which anything might happen.



Disappearance, 2017. Courtesy of the artist and the Braverman Gallery, Tel Aviv

Ayala Zacks Abramov
Pavilion for Israeli Art



Catalogue | IS 99

Audio guide

For Gallery Talk
information, see p. 27

Oren Eliav

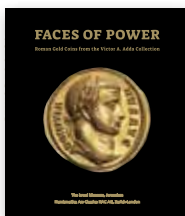
How to Disappear Completely

A 15th-century oil painting that had been displayed in the Museum's permanent exhibition of European art serves as the starting point for Oren Eliav's first solo exhibition at the Israel Museum. *The Death of Lucretia*, attributed to Italian artist Giovanni di Paolo (1403–1483), depicts the moment of Lucretia's suicide following her rape by the son of Rome's tyrannical ruler. This event is a cornerstone in the history of ancient Rome, as it is believed to have led to the overthrow of tyranny and the establishment of the first Roman Republic.

In this exhibition, Eliav – one of Israel's leading contemporary painters – presents 20 large-scale oil paintings, each magnifying a part of the original scene using a process that incorporates digital reworking, reproduction, and distortion. Visitors to the exhibition may observe the paintings from different perspectives and routes, thus becoming themselves witnesses to the elusive moment when image and painting meet, and Lucretia traverses life towards death.



Aureus of Galba, Rome, 68–69 CE



Catalogue | IS 249

Temporary Exhibition
Gallery, Samuel and
Saidye Bronfman
Archaeology Wing

Audio guide
Leaflet
Activity booklet for
children

Faces of Power

Roman Gold Coins from the Victor Adda Collection

An astounding collection of 75 gold coins never before displayed to the public, bearing the portraits of Roman Emperors and their wives. These coins offer a rare glimpse into the world of the rulers of the Roman Empire, as well as revealing the great artistic skill involved in their creation and the use of portraiture to reflect a person's character, mostly as a means of propaganda. The exhibition follows the development of portraits on coinage over a period of 350 years, from the establishment of the Empire to its acceptance of Christianity as its official religion. The slogans on the coins – the majority of which include words relating to victory, security, and peace – display how little propaganda has changed over two thousand years.

Special Displays



Focus Gallery

For Gallery Talk
information, see p. 27

Ira Eduardovna

On Foreign-Made Soles

The deep-set longing of immigrants to revisit the landscape of their childhood is at the heart of Israeli artist Ira Eduardovna's video work. Born in Tashkent, Uzbekistan, in 1980, Eduardovna immigrated to Israel with her family in 1990, as part of the great wave of immigration of the time. Made up of seven scenes, the video features local theater actresses through which Eduardovna enacts the moment of entering her childhood apartment. In the first stage she directs an actress who asks to enter the apartment. In the second stage she directs the same actress portraying the artist herself directing another actress about to step into the apartment – and so on and so forth. At each stage a new screen lights up, showing the artist in different roles. As with a Matryoshka, the artist opens one doll after another, revealing to us and to herself her own motives, fears, and feelings regarding her date with the past.



Mask-Production

At the heart of this display is a mold for a mask of a male face, the only mold of its kind known to date. Alongside the mold is a depiction of the process through which a mask was created using the mold, carried out in the Museum laboratories. This 3000-year-old artifact was recently discovered on the floor of a cultic building in the Phoenician town of Achzib. It was used for the mass-production of pottery masks depicting male faces. Masks of this type have been found mainly in Phoenician tombs throughout the Mediterranean. Too small to have been worn on the face, they may have been hung on tomb walls, wooden statues, or on coffins to drive out demons and evil spirits. Also on display are masks from tombs in Achzib, almost all produced in similar molds.

Archaeology Wing

Activity for children

For Gallery Talk information, see p. 27

Until 6.5

Hide and Seek

Ruth Youth Wing



Who's hiding behind me, or in front of me? What's hiding inside me? Where do feelings and experiences hide away? Why is it so hard to bring them out of hiding, into the open? These questions engage us as artists and educators, and students. To find some answers, we set out on a journey of soul-searching, discovery, creativity, and dialogue with guest artist Karam Natour. His drawings hang alongside the student works, offering his special take on the subject of this exhibition. Each artwork reveals a different perspective, while unveiling secrets concealed within the creative process, hidden even from ourselves. The exhibition features works by 15 groups of special-needs students of different ages. Every group came up with its own understanding of the hide-and-seek experience, of concealment and revelation.

Support the Israel Museum

The generosity of our international family of friends helps us to provide the rich program of exhibitions, publications, and special events that have become our hallmark, and which ensure our continued standing as one of the world's leading museums.

We are pleased to offer a variety of ways to deepen your engagement with the Museum – from anywhere in the world and at any giving level. Contributions can be made directly to the Museum, or you are invited to join one of our Friends of the Israel Museum organizations in the following countries: Israel, the US, Great Britain, Canada, France, Switzerland, Germany, Belgium, Austria, Mexico, Brazil, Italy, Spain, Australia, South Africa, and Hong Kong.

For further information on how to get involved with our International Friends, or to make a donation to the Israel Museum, please contact the Development and International Relations Department: imintrel@imj.org.il | 972-2-670-8098 | www.imj.org.il

Shrine of the Book

Audio guide

Model of Jerusalem in the Second Temple Period

A recreation of Jerusalem as it appeared in 66 CE at the height of its glory, a few years before its destruction.

Dorot Auditorium
No extra charge
For screening times see
the Museum's website

Film Screenings

A Human Sanctuary
Rebirth

Time Travel: The Story of the Dead Sea Scrolls

In this animated children's film, Alma sets on a wonderful journey through time to discover the incredible story of the Dead Sea Scrolls.

Every half-hour
English subtitles

The Dorot Foundation
Dead Sea Scrolls
Information and Study
Center in Memory of Joy
Gottesman Ungerleider

The Faces behind the Scrolls

Four of the seven Dead Sea Scrolls – The Great Isaiah Scroll, Community Rule Scroll, Commentary on Habakkuk Scroll, and the Genesis Apocryphon – underwent a long journey from their 1947 discovery by Bedouin shepherds in the Qumran caves to their display in the Shrine of the Book. Who were the people whose lives became entwined with these two-thousand-year-old scrolls through a fascinating chain of events involving discovery, deciphering, photographing, and dramatic acquisition? Photographs, documents, and items relating to these key figures are on display in this exhibition, which sheds new light on one of the most significant discoveries of the twentieth century.



Athanasius Yeshue Samuel.
Courtesy of Charlie Mnoog, USA

Main Gallery

Genesis Retold An Exceptional Dead Sea Scroll

In conjunction with the 70th anniversary of the discovery of the Dead Sea Scrolls, this display presents a section of the Genesis Apocryphon (col. 10), one of the seven scrolls discovered in 1947 in a cave near Qumran, on the northwestern shores of the Dead Sea. Dating to the late first century BCE, this fragile scroll is the only existing copy of this manuscript. Its text is a reworking of Genesis 6–15, and the section on display retells the biblical account of Noah's sacrifices.



James Bieberkraut

Rockefeller Archaeological Museum

Until **30.6**

Ashkelon: A Retrospective 30 Years of the Leon Levy Expedition

27 Sultan Suleiman St.
Tel. 628-2251
fawziib@imj.org.il

Sun, Mon, Wed, Thurs
10 am – 3 pm
Sat 10 am – 2 pm
Closed Tues, Fri, and
Holiday Eves

Parking available on
Saturdays only
Buses 1, 3, 3a, 51, 333

A wide-ranging selection of artifacts displayed together for the first time in this comprehensive exhibition devoted to ancient Ashkelon, whose history spans 5,000 years. Situated at the crossroads of major land and sea routes, Ashkelon was a meeting ground for many peoples and cultures. Highlights include a silver calf found in a Canaanite temple adjacent to the oldest arched gate in the world and Egyptian ritual vessels from the period of the city's destruction at the hands of Nebuchadnezzar.

From **1.5**

The Egyptian Empire in Canaan

The defeat of Canaanites by the Egyptians at the battle of Megiddo (1457 BCE) was followed by a period of Egyptian rule over Canaan lasting some 350 years. Documents from this time point to a direct military and administrative presence in Canaan. Exhibited in this gallery are monumental Egyptian artifacts of this time, excavated at Tel Beth Shean in the 1920s, including two victory stelae of the pharaoh Seti I and a statue of Ramesses III.

Special Displays

Gallery Talk | Free of charge
21.5 Thurs 12 | noon with curator Fawzi Ibrahim

Anthropoid Coffin with a Hieroglyphic Inscription

Dozens of Egyptian anthropoid coffins have been discovered in local excavations, but the coffin exhibited here is the only one that bears an inscription. Excavated in Lachish in 1938 it is believed to date to 1300–1200 BCE. Alongside the coffin, an illustration reconstructs how it would have appeared when intact.

Lintel Decorated in Relief

This lintel dating from the 17th century CE is decorated with floral and geometric elements in interlacing patterns. It belonged to one of the entrances to a khan (an inn where caravans stopped for the night) called Khan a-Zayit, located in the city of Gaza.

Ticho House

10 HaRav Agan Street
Tel. 645-3746
ticho@imj.org.il

New Opening Hours:
Sun – Thurs
12 noon – 8 pm
Fri and Holiday Eves
10 am – 2pm
Closed on Saturdays

Free entry

Anna Italian Café
Tel. 543-4144
host@annarest.co.il



Untitled, 2016. Collection of the artist

From **27.4**

Nomi Bruckmann The Gift

Gallery Talks | Free of charge
9.5, 13.6
Wed | 7 pm
With exhibition curator
Timna Seligman

At the center of this exhibition is a simple dollhouse built by Naomi Bruckmann's father for her fourth birthday; her father was killed in the War of Independence before he was able to give her the house. Two years ago Bruckmann took the dollhouse out of the closet in which it was stored and began an almost obsessive project, painting still lifes staged inside, rearranging the few objects of furniture and playing with light and darkness. Through these paintings the artist communicated with her father, dealing with his death for the first time. Her paintings capture the yearning for a lost childhood and for a missing father.

Activities for the Whole Family

1-4.4 Mon-Wed | 10 am – 3 pm
IS 15

Spring is Coming, Passover is Here!

Ages 6 and up

A Long Seder Table Illustrate a Haggadah, design a Seder plate, and decorate a cup for Elijah

11 am, 12:30 pm | Ages 6 and up

Tour in the Script Gallery followed by writing on vessels in ancient Hebrew script

Ages 3-9

Spring in the Recycling Workshop Make flowers and butterflies from a range of materials

12 noon | Ages 3-8

Illustration Library: Room on the Broom Limor Wexselblatt in a thrilling theatrical version of Julia Donaldson's story

Independence Day

Celebrating as in Old Times

19.4 Thurs | 11 am – 2 pm
Shrine of the Book Plaza and the
entrance to the Youth Wing
No extra charge

Three generations of dance troupes – “Hora Efrohim,” “Hora Ne'urim,” and “Jerusalem of Gold” – perform original Israeli dances in traditional costumes; Amir Schraiber and the Israeli Groove perform Israeli songs; folk-dancing for the public led by Mimi Kogan.

Summer Camp

First Session 1-18.7 | IS 1850
Second Session 22.7-2.8 | IS 1380
Register from 15.5 at
tel. 677-1302 or 670-8960

Inspired by *I to Eye* and other new exhibitions
Kindergarten graduates – 7th grade: Drawing and sculpture
Graduates of 4th – 6th grades: Photography, comics, design, and classic animation
Graduates of 8th grade and up: computer drawing, digital animation, photography, web design (without coding)
Graduates of 9th grade and up: Drawing and painting

Recycling Workshop

Tues 4-7 pm | 29.5 closed
Ages 3-9 | IS 15 | Tel. 670-8963

Ecology Meets Art

Interactive, enriching, challenging, and ecological experience using a range of materials collected from industrial factories.

Interactive Archaeological Dig

During Museum hours

Photographs and information displayed along a 20-meter-long wall detail the stages of an archaeological dig and the evolution of archaeology in Israel, following an object from discovery to display. An activity booklet accompanies the visitors at the path's five stations.

Hours on the Museum website

9, 16, 23, 30.4
7, 14, 28.5
4, 11, 18, 25.6

Mon | IS 30, IS 25 for Family
Membership holders | IS 160
for 6 meetings | IS 140 for
Family Membership holders
4:30 pm
5:45 pm

Tues | 5 pm | Ages 4-8
No extra charge

24.4, 8.5, 29.5, 19.6,
26.6

10.4

1.5, 5.6

15.5

22.5

12.6

Thurs | 4:30 pm | Ages 4-8
No extra charge

26.4, 10.5, 24.5, 31.5,
7.6, 21.6
3.5, 17.5, 31.5, 14.6, 28.6

Until 1.6

Sun | 5-7 pm
IS 20 per family | Space is
limited | Register at tel. 677-
1379 or at timnahsh@imj.org.il

Illustration Library

Programs sponsored by Anthony and Vanessa Beyer in honor of their children Alexander and Nikolaus Mandel Beyer

Big Art for Little Artists

A journey beginning with a story, continuing with artworks, and ending with an art activity, led by artist Michal Kerer

Ages 4-6

Ages 7-9

Story Time...With a Twist

The Audience's Choice

Right before the Illustration Award ceremony – and marking the 40th anniversary of the prize – we will read from some of the new and beautiful books published. The children are invited to play the role of judge, selecting the best of the best.

A Puddle in the Jerusalem Forest A new children's book presented by author Deborah Busihri and illustrator Noa Kelner

Singing and Dancing with dancer Elite Etrog-Hyman
Sun Salutation Story and yoga with instructor Lucy Shvamental

Birthday Stories Story and a game with Shlomit Divir
The Lion who Loved Strawberries Puppet theater based on Tirza Atar's book, with actress Maya Sahar

Brand New!

Story and creative activity in **English** with Yael Katz

Story and a game with librarian Shelly Woolf

Beloved Dog

Visitors big and small are invited to play with special games illustrated by New York-based artist Maira Kalman, in an exhibition devoted entirely to beloved dogs, featuring an illustrated mural made by Kalman especially for the Illustration Library.

Events and Cultural Programs

Full program on the Museum website | All programs are in Hebrew unless otherwise indicated

10.4 Tues | 9 pm

In the Israeli Art Gallery
IS 65 | Students and senior
citizens IS 55 | Includes
admission to the Museum
from 4 pm | Members IS 50

E-Syndrome

A Concert in Three Parts detailing the Eichman Trial

A choir and string trio use music to tell the story of the Eichman trial which began in April 1961 and captivated an entire nation. The juxtaposition of beautiful music and chilling testimonies causes unease among the audience, who must confront such challenging issues as apathy and herd mentality. Directed by and featuring Maya Buenos, the performance also features Sharon Elazar, Mary Ann Genin, Ma'ayan Zeitman, Or Hasson, Eilon Freeman, and Tzlil Rubenstein.

Triptychon High School Art Program Exhibition

15–26.4 (19.4 closed)

24.4–6.5

Graduates of the Art Track

The Beauty of Sarah

Artworks inspired by a description of Sarah in the Genesis Apocryphon; in conjunction with the Dead Sea Scrolls Symposium.

1.5 Tues | 7 pm

Springer Auditorium
Simultaneous English
translation | IS 65 | Soldiers,
students, and senior citizens
IS 60 | Members IS 50

The Dead Sea Scrolls at 70

Lectures in conjunction with the international symposium marking 70 years since the discovery of the Dead Sea Scrolls

Bannus, John the Baptist, and the Qumran Cult:

The Religious Significance of the Desert in Ancient Judaism – Adolfo D. Roitman, The Israel Museum, Jerusalem

The Tabernacle and the Temple in the Temple Scroll –

Prof. Lawrence H. Schiffman, New York University
From the Desert to the Foreground of Science: The Documentation, Preservation, Accessibility of the Scrolls – Pnina Shor, Israel Antiquities Authority

Education and the Scrolls: Developments Since the 2008 Conference – Rotem Arieli, The Israel Museum, Jerusalem and Prof. Noam Mizrahi, Tel Aviv University

Tours leave from the main entrance | IS 65 | Soldiers, students, and senior citizens
IS 60 | Members IS 50 |
Includes admission to the Museum during opening hours
Space is limited | Tickets at the front desks and on the Museum website

8.5 Tues | 6 pm

Writers Talk Art

The Israel Museum hosts the International Writers Festival



Dror Burstein: Our Forefathers' Hands

Author Dror Burstein encounters the prehistoric artifacts on display in the Museum, specifically ancient handaxes. This two-million-year-old human invention has outlived many other inventions and reflects the beginning of art and design, while also defining human activity in the world.

Opening words: Ahiaf Ovadia, Curator of Prehistoric, Archaeology Wing

10.5 Thurs | 12 noon

Alona Kimchi and Zoya Cherkassky: Pravda

In conjunction with Cherkassky's solo exhibition – *Pravda* – writer Alona Kimcha (*I, Anastasia* and *Victor and Masha*) and the artist share memories of their childhoods in the Ukraine and discuss their immigration to Israel.

Mediator: Amitai Mendelsohn, Senior Curator and Head of the Department of Israeli Art and curator of the exhibition

11.5 Fri | 11 am

Michal Govrin: Shmita – Breaking through Israeli Frames

Author and director Prof. Michal Govrin will lead us on a journey through the Museum's treasures, tracing the tension in the Land of Israel between earth and sky, between holding on to the place and its radical spiritual or political *shmita*. We will wander with the biblical verses and the laws of *shmita* from an ancient mosaic floor in the Archaeological Wing to surprising echoes in the Israeli Art galleries.

Opening words: Shua Ben-Ari, Assistant to the Chief Curator, Fine Arts Wing

22.5 Tues | 7 pm
Illustration Library
No extra charge

40th Anniversary of the Israel Museum Ben-Yitzhak Award for the Illustration of a Children's Book

Visitors are invited to view spectacularly illustrated books published in 2016–2017 and nominated for the The Israel Museum Ben-Yitzhak Award for the Illustration of a Children's Book. With Orna Granot, Curator of Illustrated Children's Books and judge on the Prize's panel

Tues **12.6** | 7 pm
In the exhibition
No extra charge

In conjunction with the exhibition *The Bourgeoisie*

The Comfortable Armchair Challenge: Enjoyment and Danger, Bourgeoisie and Authenticity

Exhibition curator Shlomit Steinberg in a discussion with Dr. Shimon Azoulay – educator and professor from the Hebrew University and the Branco-Weiss Institute – about the bourgeoisie of the past. Were they so different from those of today? What represents them and what did they represent? Why are they so prominent in European art, and how is that related to mass culture and questions of authenticity?

Gallery Talks

Gallery Talks are in Hebrew unless otherwise indicated

No extra charge

For Gallery Talks at Rockefeller Museum and Ticho House see pp. 20–21

Tues 7 pm

- 10.4** Oren Eliav: **How to Disappear Completely** with curator Aya Miron
- 24.4** Zoya Cherkassky: **Pravda** with curator Amitai Mendelsohn*
- 1.5** Ira Eduardovna: **On Foreign-Made Soles** with curator Shua Ben-Ari
- 8.5** Gil Marco Shani: **Buses** with curator Aya Miron
- 22.5** **40th Anniversary of The Israel Museum Ben-Yitzhak Award for the Illustration of a Children's Book** with curator Orna Granot
- 29.5** Zoya Cherkassky: **Pravda** with curator Amitai Mendelsohn*
- 5.6** **To Go: New Designs for Jewish Ritual Objects** with curator Sharon Weiser-Ferguson and designers Thomas Traxler (Vienna) and Sebastian Bregne (London)
- 19.6** Oren Eliav and Gil Marco Shani with assistant to the curator Tamara Abramovitch

Wed 12 noon

- 25.4** **The Bourgeoisie** with exhibition curator Shlomit Steinberg*
- 2.5** **Mask-Production** with curator Eran Arie
- 9.5** **To Go: New Designs for Jewish Ritual Objects** with curator Sharon Weiser-Ferguson
- 16.5** Oren Eliav and Gil Marco Shani with curator Aya Miron
- 23.5** **The Book of Ruth: Strangers and Converts from Canaan to Tel Aviv** with Oren Myers
- 30.5** Zoya Cherkassky: **Pravda** with curator Amitai Mendelsohn*
- 13.6** Oren Eliav and Gil Marco Shani with assistant curator Tamara Abramovitch
- 20.6** **Fashion Statements: Decoding Israeli Dress** with exhibition co-curators
- 27.6** Zoya Cherkassky: **Pravda** with curator Amitai Mendelsohn*

* Register in advance at tel. 677-1302, 670-8960



Members



Membership renewal and additional information at tel. 670-8855, at members@imj.org.il, or at the Members' Desk at the Museum entrance on Sun–Thurs

Give a friend a gift membership and enjoy an additional month of membership!

12.6

Tues | 3–8 pm | Free upon presentation of Member's card
Members may invite two guests (extra charge)

Pre-Opening of *Fashion Statements: Decoding Israeli Dress*

Open viewing of the exhibition
Further details to be emailed before to the event.

27.4, 18.5

Fri | 12:30 pm | No extra charge
Springer Auditorium

Neighboring Sounds

The Museum hosts a concert series performed by the outstanding students from the nearby Conservatory of the Jerusalem Academy of Music and Dance

8.5 | Tues | 6 pm

Springer Auditorium
Space is limited | Register at members@imj.org.il

The Fascinating World of Phoenician Artisans

On masks, jewelry, ivory objects, and other handmade items created by the Phoenicians: lecture by Eran Arie, Curator of the Iron Age and Persian Period Archaeology

Special Benefits for Members:

Discounts on tickets for Museum events

Shops, cafés, and restaurants: 10% discount

Entrance ticket for friends who join you on a visit to the Museum: 10% discount

Free entry to Haifa Museums: Haifa Museum of Art, Tikotin Museum of Japanese Art, National Maritime Museum, and Haifa City Museum

Israeli Friends

Association of Israeli Friends of the Israel Museum

Tel. 677-1344, 670-8815, learo@imj.org.il

The Association sees as its mission to strengthen the Museum's relationship with the local community of art, archaeology, and Jewish art patrons. It aims to raise funds for the Museum, engage its members with the Museum's rich and varied program, and reach out to the public at large.

Among the many activities that members enjoy are exclusive previews of new exhibitions, encounters with Israeli artists, invitations to exhibition openings, visits to private collections in Israel and around the world, and more. Tours abroad have included New York, Los Angeles, Chicago, Milan, Rome, Miami, and China.

The yearly activities culminate in a special Gala evening whose proceeds subsidize a free entrance to the Museum and guided tours for soldiers doing compulsory military service and for those doing National Service.

Members may choose one of the following membership options: Friend, Israeli Patron, International Patron, and Guardian.

Please note that 80% of the membership fees are recognized as a tax-deductible donation.

The "Here & Now" Contemporary Israeli Art Acquisitions Committee

Join the committee and enjoy the rare opportunity to participate in the purchase of contemporary Israeli art for the Museum's collections. In the past eight years only, the committee has acquired some 120 important works by leading Israeli artists, displayed in the Museum's galleries. One of the high points of the committee's yearly activity is a special trip to a central art event abroad – including, in recent years, the Manifesta in St. Petersburg; the Biennale in Venice, Miami; China; and Documenta in Greece.

Please note that all expenses are recognized as a tax-deductible donation.

An Original Gift Idea

A personalized certificate acknowledging your donation towards educational and youth activities at the Museum (for a contribution of IS 180 or more) will be issued by the office of Israeli Friends of the Israel Museum: 670-8815, 677-1344; Learo@imj.org.il

The Israeli Friends provide free entry for soldiers doing compulsory military service and for those doing National Service.



Free Guided Tours

Schedule subject to change

Unless otherwise indicated:

Meet at the Upper Information Desk

Tours are in English and last approximately one hour



Sun, Thurs 2 pm
Sun, Mon, Wed, Thurs 12:30 pm
Sun, Mon, Wed, Thurs 11 am
Sun, Mon, Wed, Thurs 3 pm
(Meet in the Entrance Pavilion)
Fri, Sat 11 am
Mon, Thurs 11 am
Thurs 11 am
Thurs 11 am

Israel Celebrates 70
Jewish Art and Life and Synagogue Route
Archaeology
Shrine of the Book and Model

Highlights
French-language highlights tour
Spanish-language highlights tour
Russian-language highlights tour

Additional charge:

Tours in a variety of languages
Tel. 670-8884 | emilia@imj.org.il

Tel. 670-8805, 677-1305
navas@imj.org.il

Tel. 677-1379
timnahsh@imj.org.il

Private Groups and Organizations

Schools and Other Educational Institutions

Special Education Groups and Visitors with Special Needs

Information

Tel. 670-8811

Membership Office

Tel. 670-8855 | members@imj.org.il

Volunteers Organization

Tel. 670-8925 | volunteers@imj.org.il

IFIM Office

Tel. 670-8815 | learo@imj.org.il

Youth Wing for Art Education

Tel. 670-8835 | youthmus@imj.org.il



Special Events

Tel. 670-8895 | 6 | events@imj.org.il

Audio guide in selected languages free of charge in the Entrance Pavilion

Library

Sun, Mon, Wed, Thurs 10 am – 4 pm
Tues 4–8 pm
Computerized catalogue:
<http://israelmuseum.exlibris.co.il>
library@imj.org.il | Tel. 670-8886

Youth Wing Illustration Library

Tel. 670-8952 | ywl@imj.org.il
Detail on p. 22

Film Screenings in the Dorot Auditorium

No extra charge | For screening times see the website or call 633-2566

The Dorot Foundation Dead Sea Scrolls Information and Study Center in Memory of Joy Gottesman Ungerleider

Open during regular hours
Tel. 633-2564

Study Room for Prints, Drawings, and Photographs; The Arturo Schwarz Dada and Surrealist Library; The Norman Bier Section for Maps of the Holy Land

By appointment only
Prints and Drawings, Schwarz Library, and Bier Maps Section:
Tel. 670-8853, 670-8065
Photographs: Tel. 670-8843

The Isidore and Anne Falk Information Center for Jewish Art and Life

By appointment only | Tel. 677-1304

The Museum Shops

Open during regular hours and Tues from 10 am
Tel. 670-8883 | shop@imj.org.il

Café Mansfeld

Kosher Mehadrin, Jerusalem
Tel. 563-6280

Chic Café

Tel. 633-2555

Modern Restaurant

Kosher (meat), under the supervision of the Jerusalem Rabbinate
Tel. 648-0862



www.imj.org.il
Visit the website to receive updated information about exhibitions and events directly to your inbox.



**Free entrance
for children***

**כניסה חינם
לילדים***

* On Tuesdays, Saturdays, and Passover
For activities for the whole family, see pp. 22–23

* בימים ג', בשבת ובפסח
פרטים על הפעילויות לכל המשפחה בעמ' 22–23